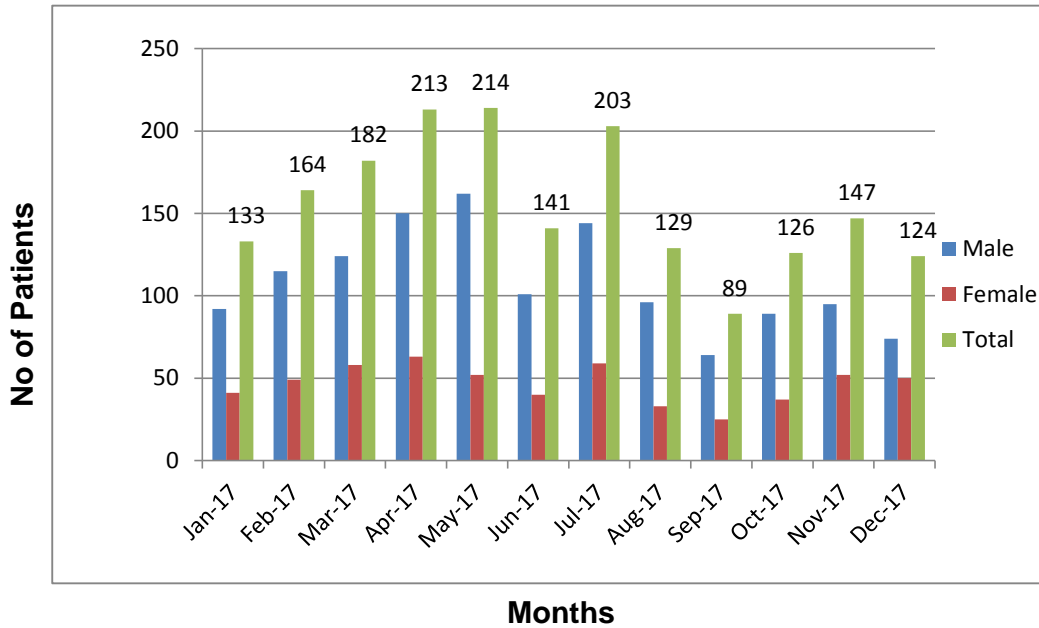


Karachi Institute of Heart Diseases
Summary of Angiography
Jan - Dec 2017

S.No	Month & Year	Male	Female	Total
1	Jan-17	92	41	133
2	Feb-17	115	49	164
3	Mar-17	124	58	182
4	Apr-17	150	63	213
5	May-17	162	52	214
6	Jun-17	101	40	141
7	Jul-17	144	59	203
8	Aug-17	96	33	129
9	Sep-17	64	25	89
10	Oct-17	89	37	126
11	Nov-17	95	52	147
12	Dec-17	74	50	124
Total		1306	559	1865

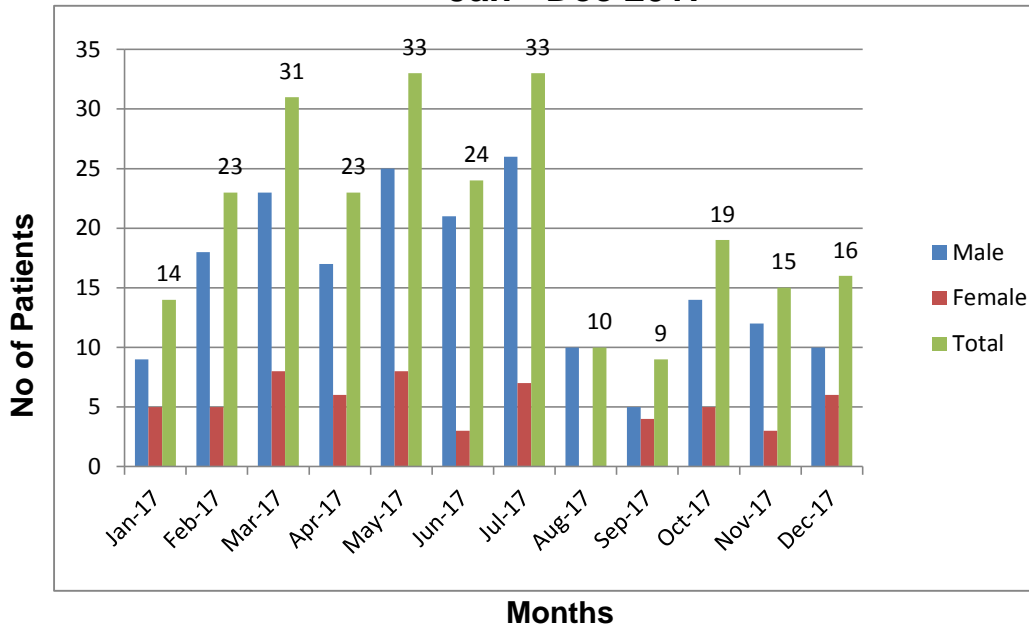
Summary Of Angiography
Jan- Dec 2017



Karachi Institute of Heart Diseases
Summary of Angioplasty
Jan - Dec 2017

S.No	Month & Year	Male	Female	Total
1	Jan-17	9	5	14
2	Feb-17	18	5	23
3	Mar-17	23	8	31
4	Apr-17	17	6	23
5	May-17	25	8	33
6	Jun-17	21	3	24
7	Jul-17	26	7	33
8	Aug-17	10	0	10
9	Sep-17	5	4	9
10	Oct-17	14	5	19
11	Nov-17	12	3	15
12	Dec-17	10	6	16
Total		190	60	250

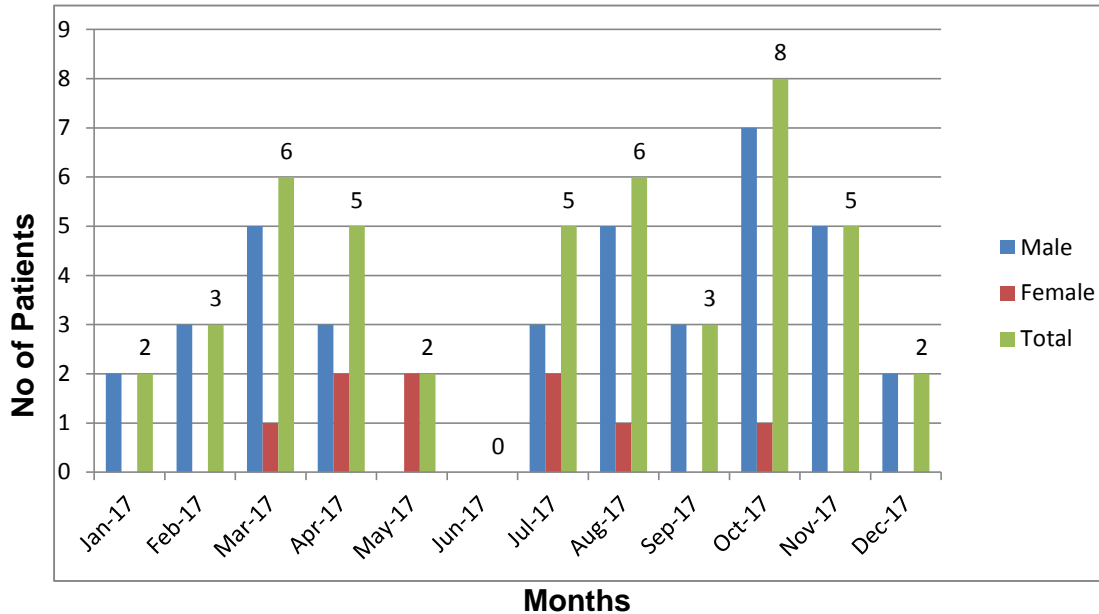
Summary of Angioplasty
Jan - Dec 2017



Karachi Institute of Heart Diseases
Summary of Bypass
Jan - Dec 2017

S.No	Month & Year	Male	Female	Total
1	Jan-17	2	0	2
2	Feb-17	3	0	3
3	Mar-17	5	1	6
4	Apr-17	3	2	5
5	May-17	0	2	2
6	Jun-17	0	0	0
7	Jul-17	3	2	5
8	Aug-17	5	1	6
9	Sep-17	3	0	3
10	Oct-17	7	1	8
11	Nov-17	5	0	5
12	Dec-17	2	0	2
Total		38	9	47

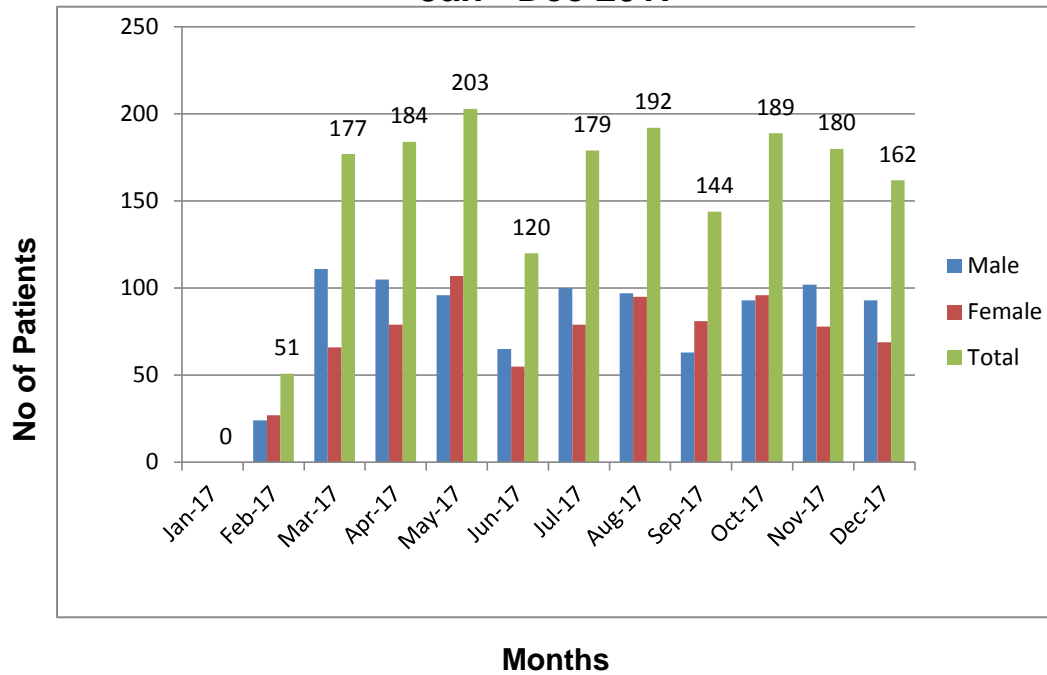
Summary Of ByPass
Jan - Dec 2017



Karachi Institute of Heart Diseases
Summary of Thallium
Jan - Dec 2017

S.No	Month & Year	Male	Female	Total
1	Jan-17	0	0	0
2	Feb-17	24	27	51
3	Mar-17	111	66	177
4	Apr-17	105	79	184
5	May-17	96	107	203
6	Jun-17	65	55	120
7	Jul-17	100	79	179
8	Aug-17	97	95	192
9	Sep-17	63	81	144
10	Oct-17	93	96	189
11	Nov-17	102	78	180
12	Dec-17	93	69	162
Total		949	832	1781

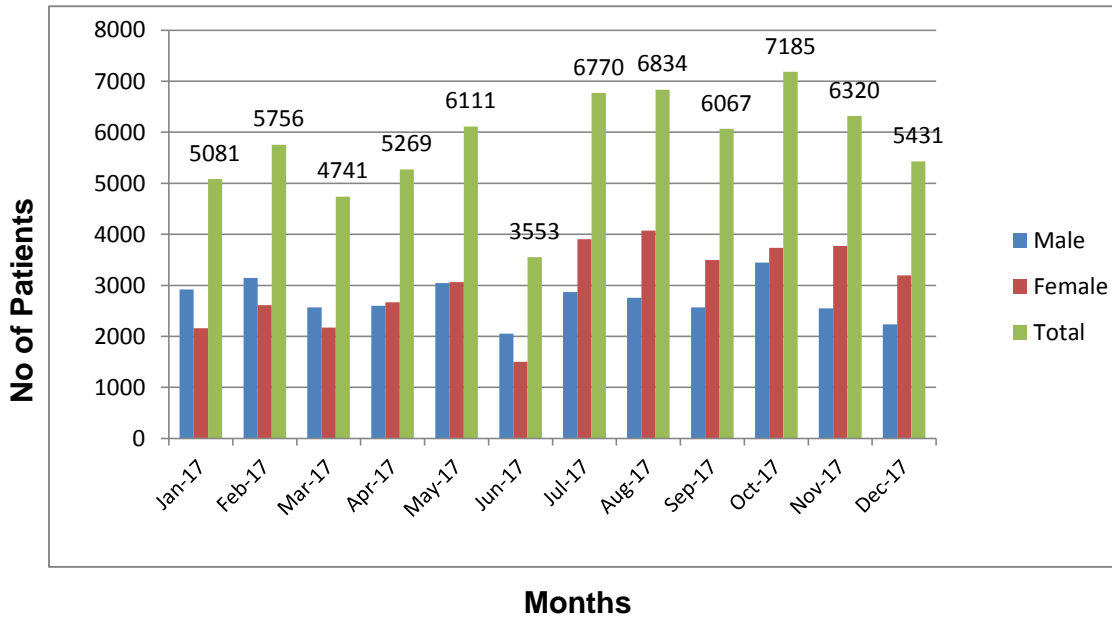
Summary Of Thallium
Jan - Dec 2017



Karachi Institute of Heart Diseases
Summary of OPD
Jan - Dec 2017

S.No	Month & Year	Male	Female	Total
1	Jan-17	2921	2160	5081
2	Feb-17	3147	2609	5756
3	Mar-17	2571	2170	4741
4	Apr-17	2602	2667	5269
5	May-17	3047	3064	6111
6	Jun-17	2053	1500	3553
7	Jul-17	2866	3904	6770
8	Aug-17	2758	4076	6834
9	Sep-17	2569	3498	6067
10	Oct-17	3448	3737	7185
11	Nov-17	2550	3770	6320
12	Dec-17	2233	3198	5431
Total		32765	36353	69118

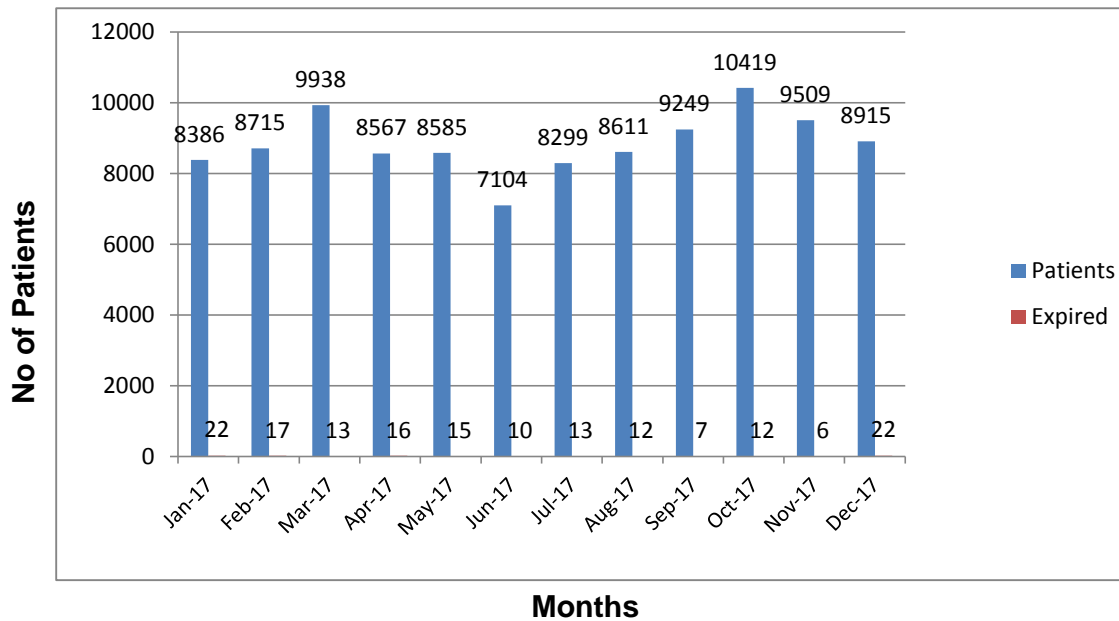
Summary Of OPD
Jan - Dec 2017



Karachi Institute of Heart Diseases
Summary of ER
Jan - Dec 2017

S.No	Month & Year	Patients	Expired	B.D	% of Exp
1	Jan-17	8386	22	138	0.262
2	Feb-17	8715	17	99	0.195
3	Mar-17	9938	13	88	0.13
4	Apr-17	8567	16	92	0.186
5	May-17	8585	15	98	0.174
6	Jun-17	7104	10	77	0.14
7	Jul-17	8299	13	117	0.156
8	Aug-17	8611	12	109	0.139
9	Sep-17	9249	7	123	0.075
10	Oct-17	10419	12	110	0.115
11	Nov-17	9509	6	126	0.063
12	Dec-17	8915	22	145	0.246
Total		106297	165	1322	0.16

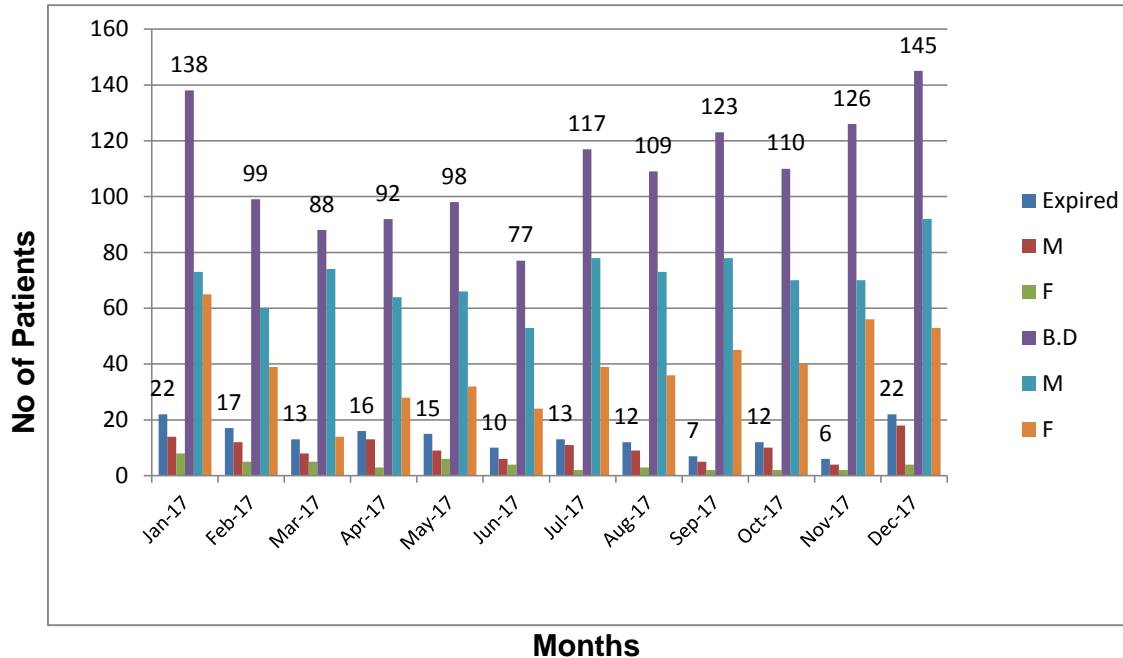
Summary Of E.R
Jan - Dec 2017



Karachi Institute of Heart Diseases
Summary of ER (Expire & BD)
Jan - Dec 2017

S.No	Month & Year	Expired	M	F	B.D	M	F
1	Jan-17	22	14	8	138	73	65
2	Feb-17	17	12	5	99	60	39
3	Mar-17	13	8	5	88	74	14
4	Apr-17	16	13	3	92	64	28
5	May-17	15	9	6	98	66	32
6	Jun-17	10	6	4	77	53	24
7	Jul-17	13	11	2	117	78	39
8	Aug-17	12	9	3	109	73	36
9	Sep-17	7	5	2	123	78	45
10	Oct-17	12	10	2	110	70	40
11	Nov-17	6	4	2	126	70	56
12	Dec-17	22	18	4	145	92	53
Total		165	119	46	1322	851	471

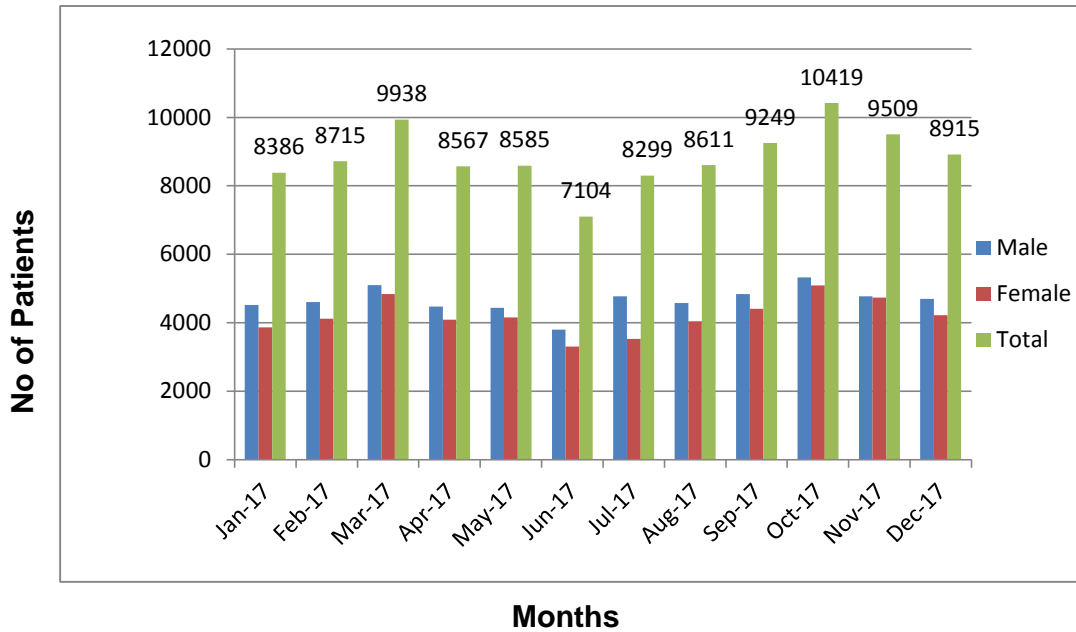
Summary Of E.R(Expire & BD)
Jan - Dec 2017



Karachi Institute of Heart Diseases
Summary of ER
Jan - Dec 2017

S.No	Month & Year	Male	Female	Total
1	Jan-17	4520	3866	8386
2	Feb-17	4602	4113	8715
3	Mar-17	5098	4840	9938
4	Apr-17	4474	4093	8567
5	May-17	4434	4151	8585
6	Jun-17	3797	3307	7104
7	Jul-17	4769	3530	8299
8	Aug-17	4572	4039	8611
9	Sep-17	4839	4410	9249
10	Oct-17	5325	5094	10419
11	Nov-17	4772	4737	9509
12	Dec-17	4698	4217	8915
Total		55900	50397	106297

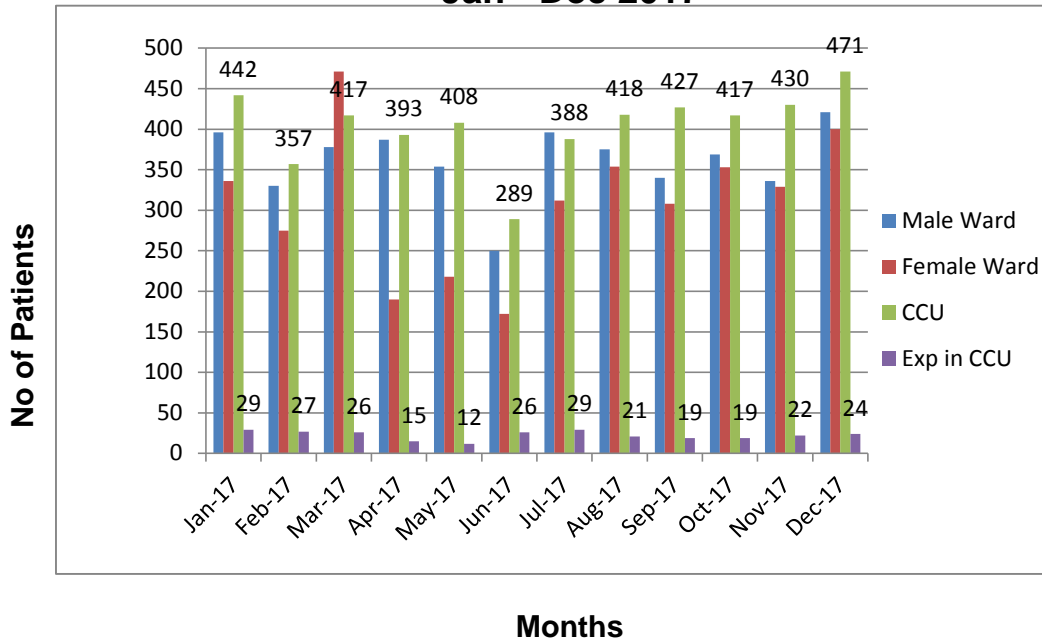
Summary Of E.R
Jan - Dec 2017



Karachi Institute of Heart Diseases
Summary of Admission
Jan - Dec 2017

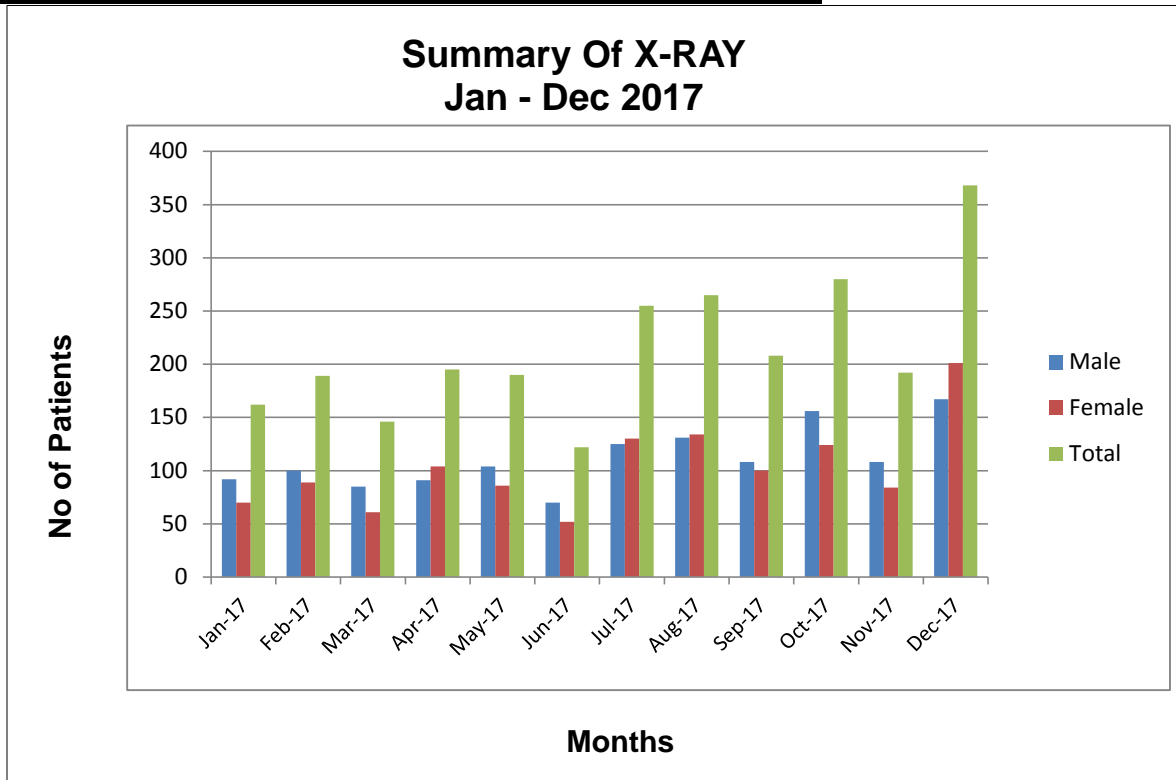
S.No	Month & Year	Male Ward	Female Ward	CCU	Exp in CCU
1	Jan-17	396	336	442	29
2	Feb-17	330	275	357	27
3	Mar-17	378	471	417	26
4	Apr-17	387	190	393	15
5	May-17	354	218	408	12
6	Jun-17	250	172	289	26
7	Jul-17	396	312	388	29
8	Aug-17	375	354	418	21
9	Sep-17	340	308	427	19
10	Oct-17	369	353	417	19
11	Nov-17	336	329	430	22
12	Dec-17	421	400	471	24
Total		4332	3718	4857	269

Summary Of Admission
Jan - Dec 2017



Karachi Institute of Heart Diseases
Summary of X-Ray
Jan - Dec 2017

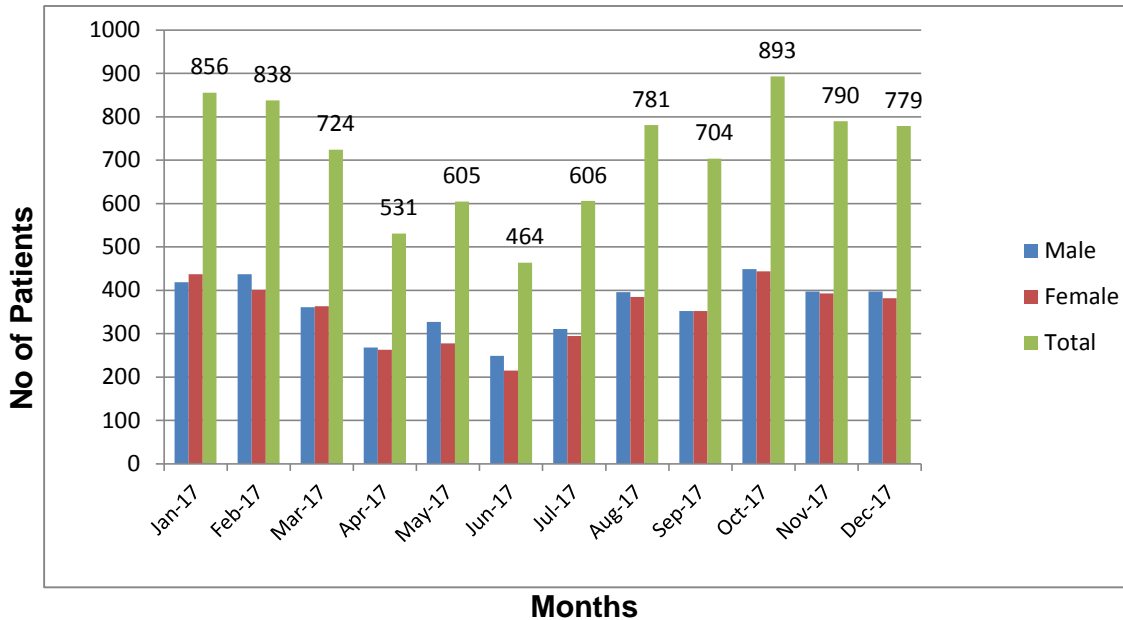
S.No	Month & Year	Male	Female	Total
1	Jan-17	92	70	162
2	Feb-17	100	89	189
3	Mar-17	85	61	146
4	Apr-17	91	104	195
5	May-17	104	86	190
6	Jun-17	70	52	122
7	Jul-17	125	130	255
8	Aug-17	131	134	265
9	Sep-17	108	100	208
10	Oct-17	156	124	280
11	Nov-17	108	84	192
12	Dec-17	167	201	368
Total		1337	1235	2572



Karachi Institute of Heart Diseases
Summary of Echo
Jan - Dec 2017

S.No	Month & Year	Male	Female	Total
1	Jan-17	419	437	856
2	Feb-17	437	401	838
3	Mar-17	361	363	724
4	Apr-17	268	263	531
5	May-17	327	278	605
6	Jun-17	249	215	464
7	Jul-17	311	295	606
8	Aug-17	396	385	781
9	Sep-17	352	352	704
10	Oct-17	449	444	893
11	Nov-17	397	393	790
12	Dec-17	397	382	779
Total		4363	4208	8571

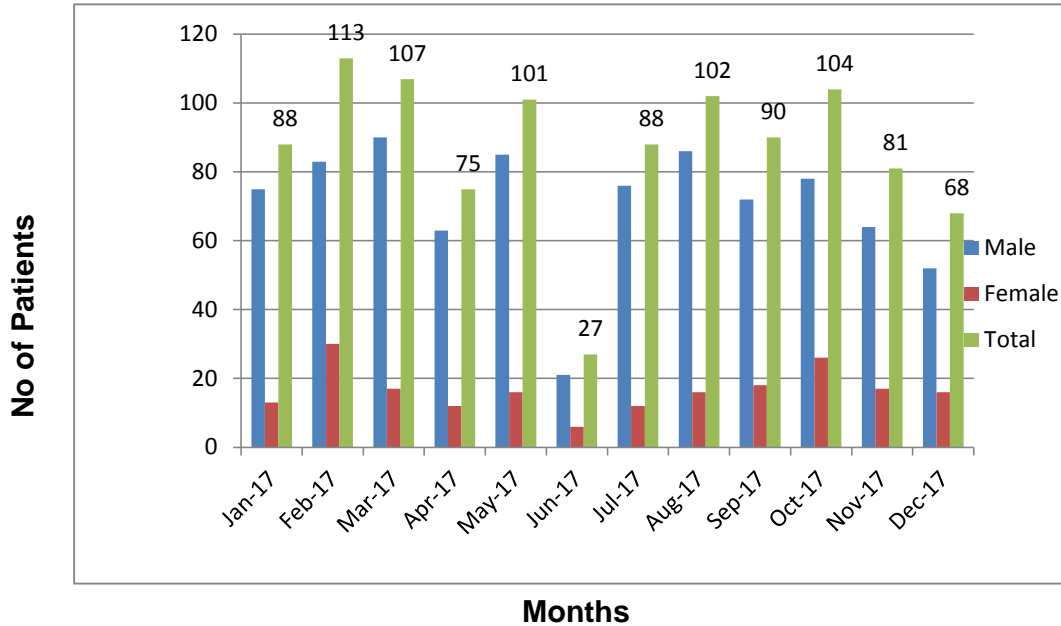
Summary Of ECHO
Jan - Dec 2017



Karachi Institute of Heart Diseases
Summary of ETT
Jan - Dec 2017

S.No	Month & Year	Male	Female	Total
1	Jan-17	75	13	88
2	Feb-17	83	30	113
3	Mar-17	90	17	107
4	Apr-17	63	12	75
5	May-17	85	16	101
6	Jun-17	21	6	27
7	Jul-17	76	12	88
8	Aug-17	86	16	102
9	Sep-17	72	18	90
10	Oct-17	78	26	104
11	Nov-17	64	17	81
12	Dec-17	52	16	68
Total		845	199	1044

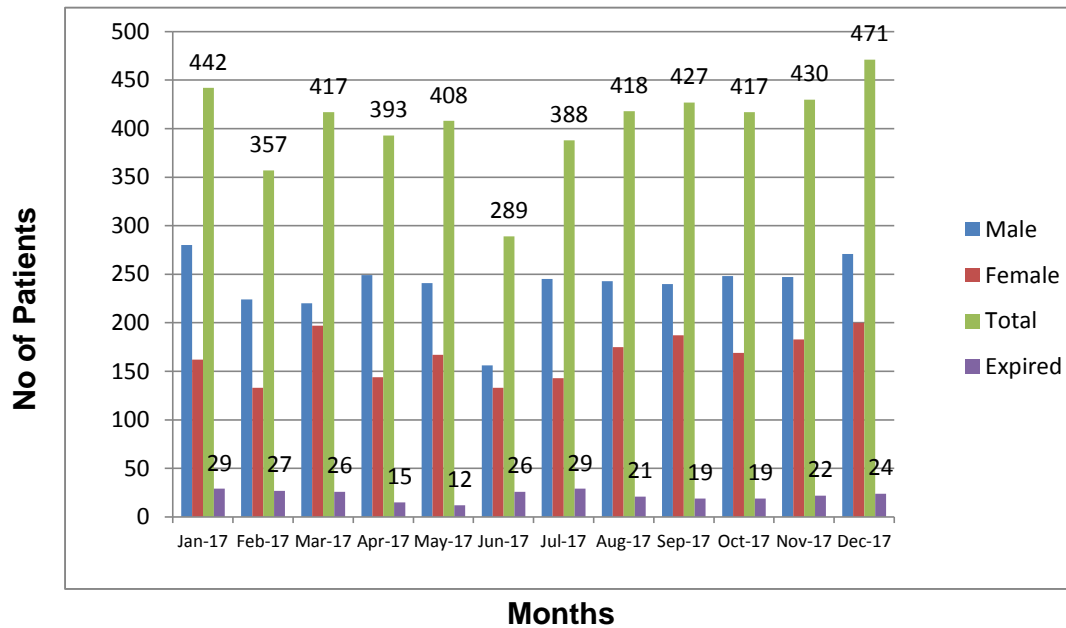
Summary Of ETT
Jan - Dec 2017



Karachi Institute of Heart Diseases
Summary of CCU
Jan - Dec 2017

S.No	Month & Year	Male	Female	Total	Expired	Male	Female
1	Jan-17	280	162	442	29	19	10
2	Feb-17	224	133	357	27	17	10
3	Mar-17	220	197	417	26	18	8
4	Apr-17	249	144	393	15	11	4
5	May-17	241	167	408	12	3	9
6	Jun-17	156	133	289	26	13	13
7	Jul-17	245	143	388	29	11	18
8	Aug-17	243	175	418	21	14	7
9	Sep-17	240	187	427	19	9	10
10	Oct-17	248	169	417	19	11	8
11	Nov-17	247	183	430	22	13	9
12	Dec-17	271	200	471	24	10	14
Total		2864	1993	4857	269	149	120

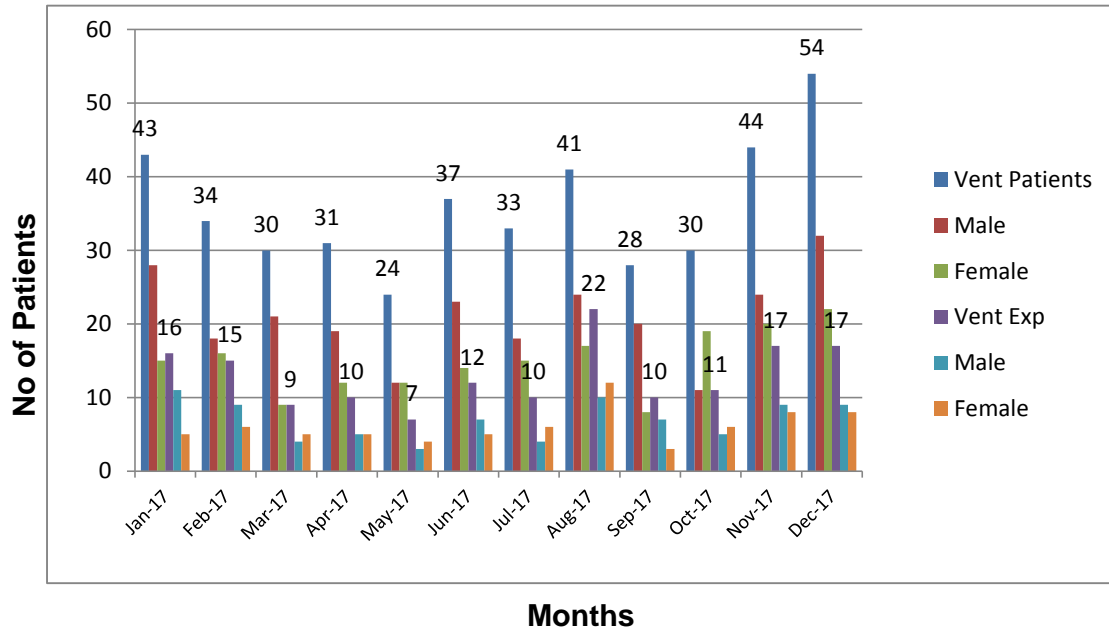
Summary Of CCU
Jan - Dec 2017



Karachi Institute of Heart Diseases
Summary of CCU
Jan - Dec 2017

S.No	Month & Year	Vent Patients	Male	Female	Vent Exp	Male	Female
1	Jan-17	43	28	15	16	11	5
2	Feb-17	34	18	16	15	9	6
3	Mar-17	30	21	9	9	4	5
4	Apr-17	31	19	12	10	5	5
5	May-17	24	12	12	7	3	4
6	Jun-17	37	23	14	12	7	5
7	Jul-17	33	18	15	10	4	6
8	Aug-17	41	24	17	22	10	12
9	Sep-17	28	20	8	10	7	3
10	Oct-17	30	11	19	11	5	6
11	Nov-17	44	24	20	17	9	8
12	Dec-17	54	32	22	17	9	8
Total		429	250	179	156	83	73

Summary Of CCU
Jan - Dec 2017



Karachi Institute of Heart Diseases
Summary of CT. ANGIO
Jan - Dec 2017

S.No	Month & Year	Male	Female	Total
1	Jan-17	0	0	0
2	Feb-17	0	0	0
3	Mar-17	0	0	0
4	Apr-17	0	0	0
5	May-17	0	0	0
6	Jun-17	0	0	0
7	Jul-17	0	0	0
8	Aug-17	0	0	0
9	Sep-17	0	0	0
10	Oct-17	0	0	0
11	Nov-17	0	0	0
12	Dec-17	0	0	0
Total		0	0	0

Summary Of CT. ANGIO
Jan - Dec 2017

